



MV 'FRI SEA'

3500 dwcc

General

Built 3 / 2001 – Tille Shipyards, Kootstertille, NL.
IMO no. 9229166
MMSI no. 311028300
Call Sign C6YB3
Flag / Nationality Bahamas
Port of Registry / Number Nassau / 8001688
P&I SKULD
Class Germanischer Lloyd

Comms

GSM: +47 9342 3779
FAX : +47 9417 6819 (GSM)
SAT : +870
E-mail: 431100618@inmc.eik.com
431100617@inmc.eik.com

Dimensions

DWT 3 676 mts
GRT 2 601 mts
NWT 1 428 mts
Length O.A. 91,25 m
Breadth 14,02 m max / 13,75m moulded
Air Draft 23,00 m Ballast
Max Summer Draft 5,225 m
Ballast Draft 2,80 m Fore / 3,60 m Aft
Depth Moulded 6,25 m
Dist. WL to top HC 6,00m on even keel

ISPS Info

Issuing Body (RO) ISSC DNV
CSO Tlph: +47 9092 7516

ISM Info

Issuing Body (RO) ISM: DNV
Tlph: +47 9092 7516

Capacities

Cargo Capacity 3500 mts Summer / 3400mts Winter
Hold Dimensions 1Hold - 61,875m x 10,800m x 7,925m
Hatches 1Hatch / 10 Pontoons
Hold Capacity 5 168 m³ / 182 119 ft³
Container Capacity 142 TEU (102/40 Hold/Deck)
Max Load Tanktop 15,0 mts m² / Hatches 1,6 mts m²

Owners

FRI SEA AS (IMO 5491419)
c/o Kopervik Ship Management AS (IMO 1861598)
Hovedgt. 57
N-4250 Kopervik, Norway
Tlph: +47 5284 5550
Fax : +47 5284 5551
E-mail: post@kopervikshipping.no

Performance

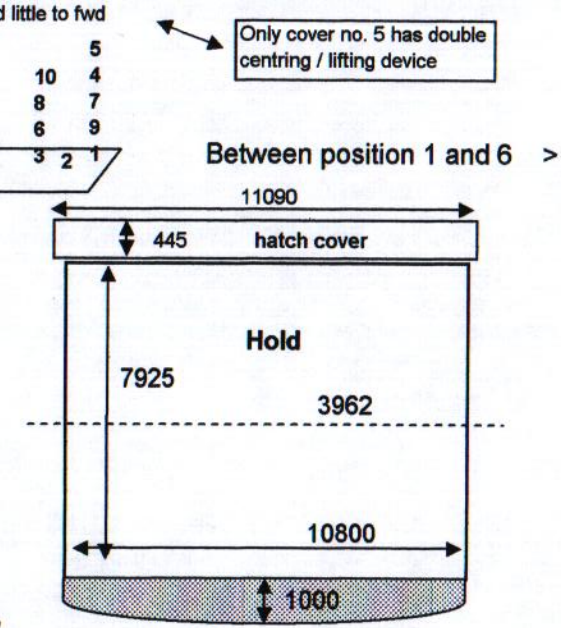
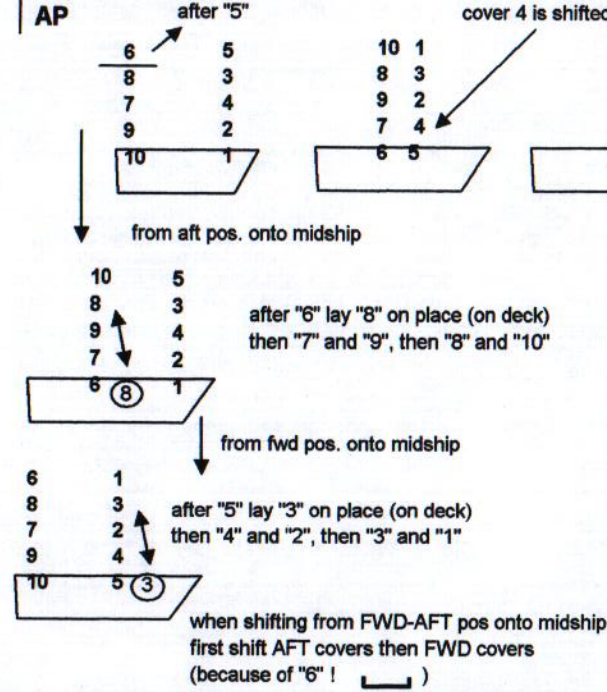
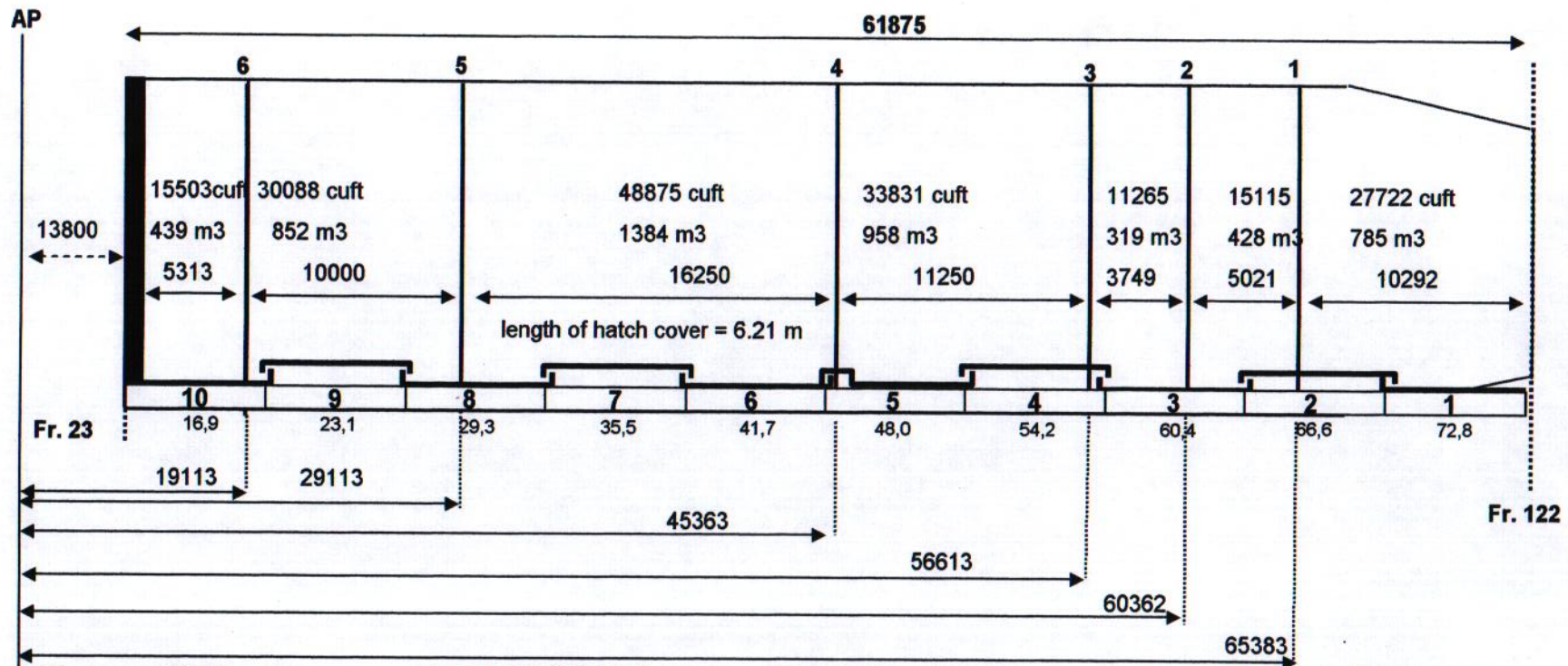
Speed / Consumption 14,0 kts / Abt. 9,0 mts MDO
11,0 kts / Abt. 6,5 mts MDO

Propulsion System

ME Wärtsilä Diesel Type 6L26A 1950 kW
Bow Thruster – 205 kW

Operators

Høyergruppen AS
P.O.Box 1014
N-3905 Porsgrunn, Norway
Tlph: +47 3556 9400
Fax : +47 3556 9432
AOH: +47 9151 8012
E-mail: chartering@hoyergruppen.com



Hold capacity

5168 m3 / 182119 cuft

Between position 1 and 6 > 85.17m3 / per metre holdlength

Thickness of bulkhead = 0.26m

Load	Weight
Hatchcover load	40 cbft/t = 1.132 m ³ /t
1.6 t/m ²	45 cbft/t = 1.274
Tanktop load	46 cbft/t = 1.302
15 t/m ²	47 cbft/t = 1.330
	48 cbft/t = 1.358
	49 cbft/t = 1.387
	50 cbft/t = 1.415
	55 cbft/t = 1.556
	65 cbft/t = 1.840